

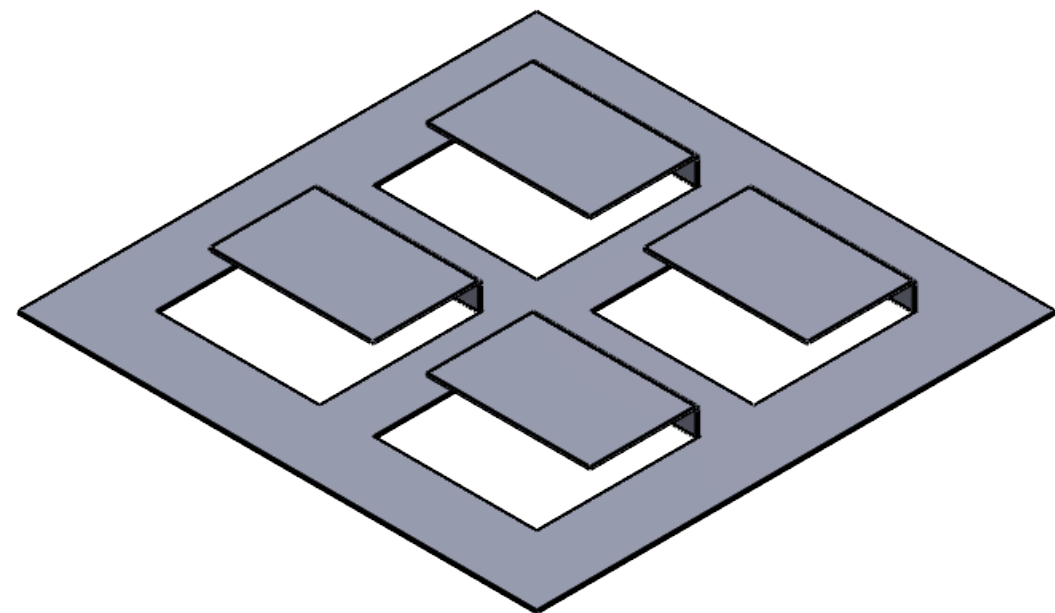
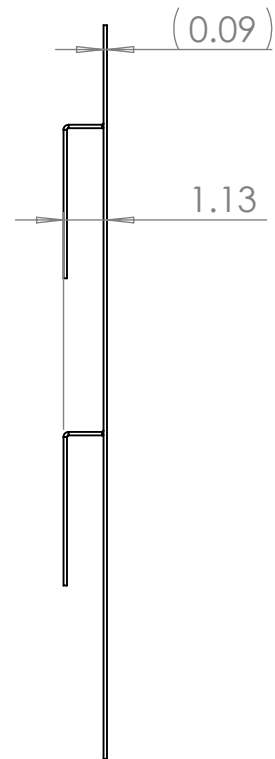
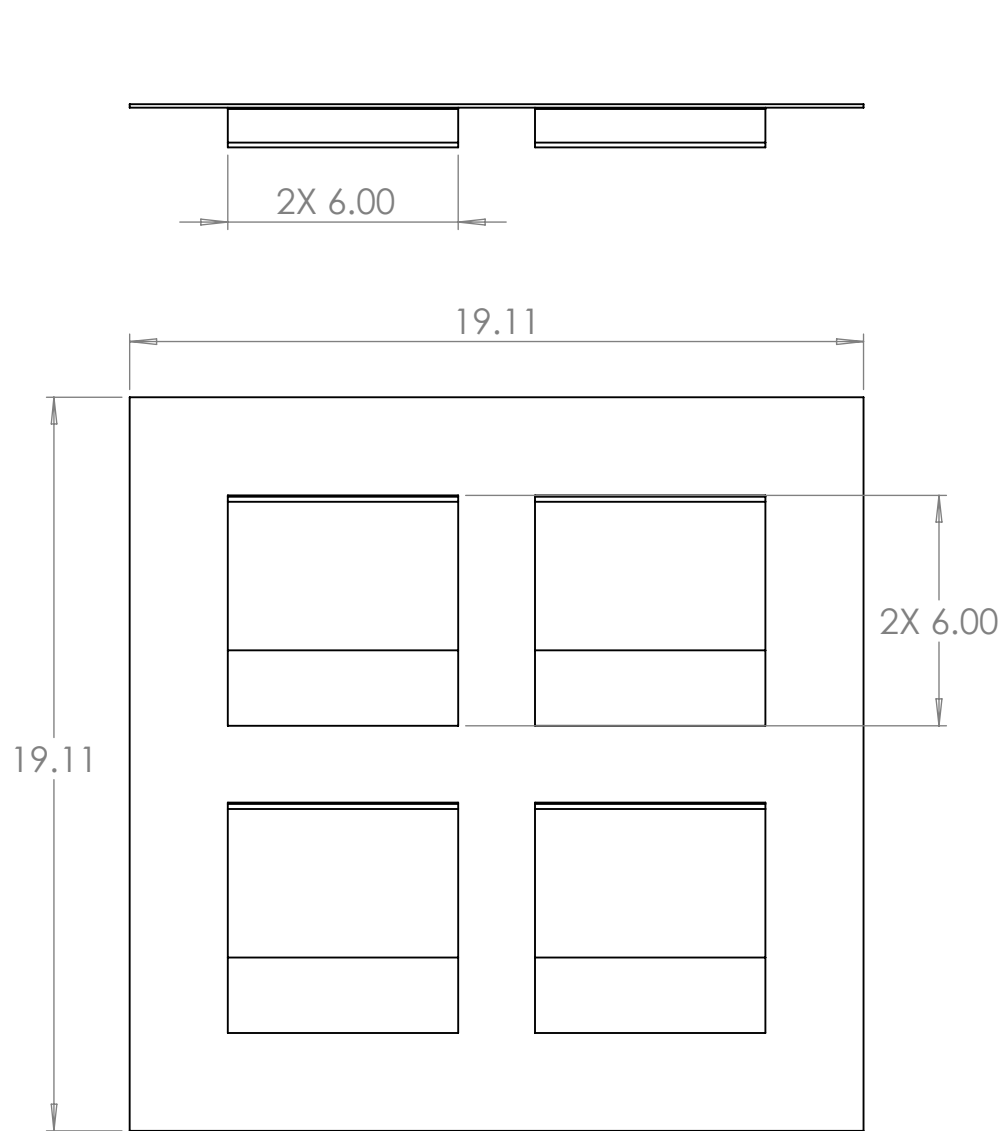
4

3

2

1

B


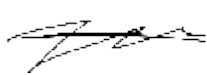


B

A

- NOTES: UNLESS OTHERWISE SPECIFIED.
- PARAMETRIC MODEL. ALL DIMENSIONS FURTHER SPECIFIED IN 003-00053.
 - FLAT PATTERN FOR PART SPECIFIED ON LAST SHEET OF DRAWING.
 - PART SHALL BE FREE OF ANY SHARP EDGES AND BURRS.
 - PART TO BE CLEANED OF ALL OIL AND DEBRIS.
 - MATERIAL: A1008 STEEL
 - FINISH: NONE
 - GAUGE: 13
 - PART SHALL NOT BE MODIFIED BY ANY PARTY OUTSIDE PAPERLESS PARTS, INC UNLESS WRITTEN OR EXPRESS APPROVAL HAS BEEN PERMITTED FOR THE PART.

PROPRIETARY AND CONFIDENTIAL
THE INFORMATION CONTAINED IN THIS
DRAWING IS THE SOLE PROPERTY OF
PAPERLESS PARTS, INC. ANY
REPRODUCTION IN PART OR AS A WHOLE
WITHOUT THE WRITTEN PERMISSION OF
PAPERLESS PARTS, INC IS
PROHIBITED.

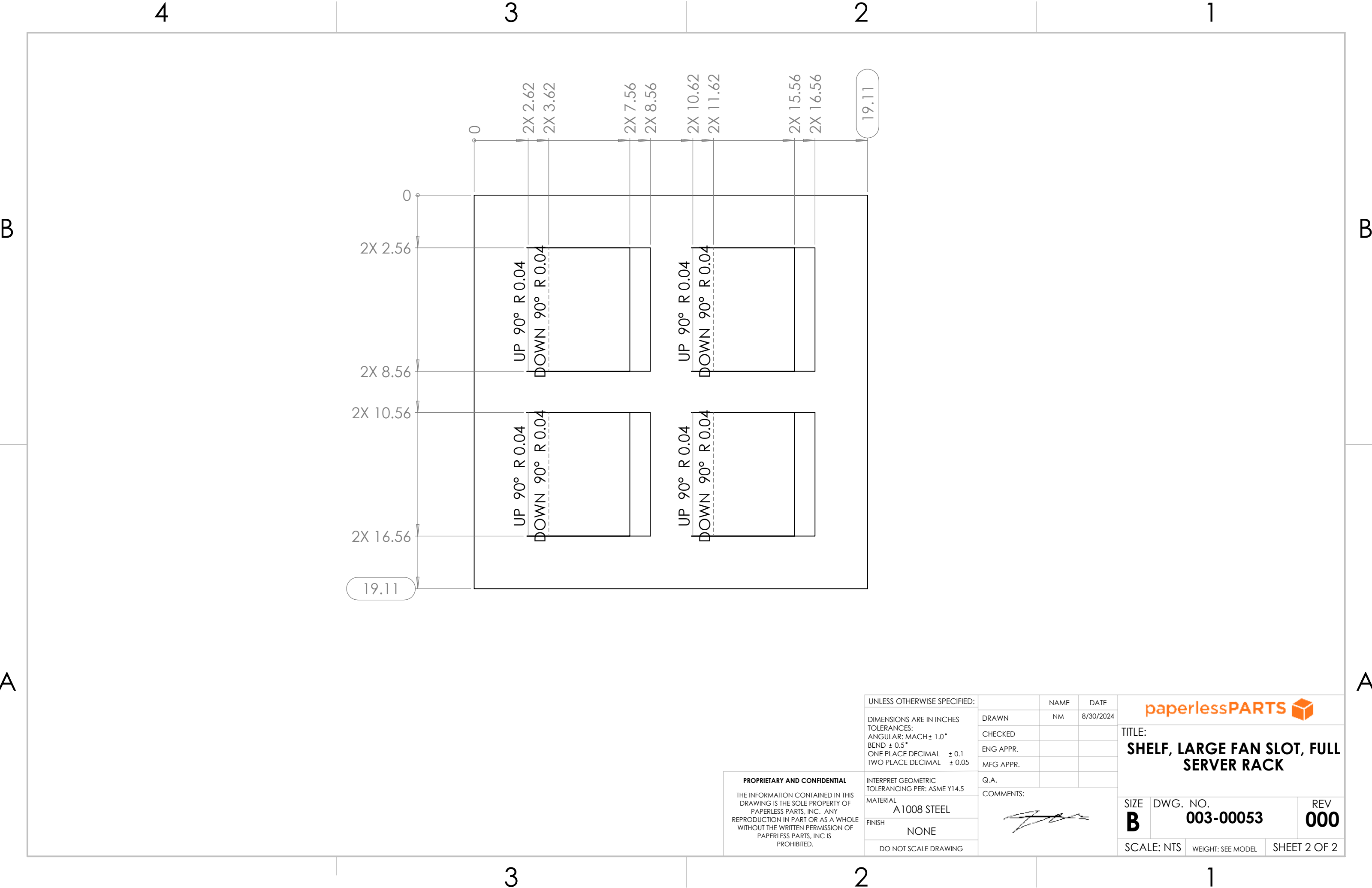
UNLESS OTHERWISE SPECIFIED:		NAME	DATE	<div></div> <div>TITLE: SHELF, LARGE FAN SLOT, FULL SERVER RACK</div>	
DIMENSIONS ARE IN INCHES		DRAWN	NM		
TOLERANCES:		CHECKED			
ANGULAR: MACH ± 1.0°		ENG APPR.			
BEND ± 0.5°		MFG APPR.		<div>Q.A.</div> <div>COMMENTS: </div>	
ONE PLACE DECIMAL ± 0.1					
TWO PLACE DECIMAL ± 0.05					
MATERIAL		A1008 STEEL		SIZE	DWG. NO.
FINISH		NONE		B	003-00053
DO NOT SCALE DRAWING				SCALE: NTS	WEIGHT: SEE MODEL
				REV	
				000	
				SHEET 1 OF 2	

A


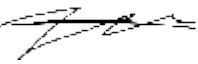
3

2

1



PROPRIETARY AND CONFIDENTIAL
THE INFORMATION CONTAINED IN THIS DRAWING IS THE SOLE PROPERTY OF PAPERLESS PARTS, INC. ANY REPRODUCTION IN PART OR AS A WHOLE WITHOUT THE WRITTEN PERMISSION OF PAPERLESS PARTS, INC IS PROHIBITED.

UNLESS OTHERWISE SPECIFIED:		NAME	DATE	<div></div> <div>TITLE: SHELF, LARGE FAN SLOT, FULL SERVER RACK</div>	
DIMENSIONS ARE IN INCHES		DRAWN	NM		
TOLERANCES:		CHECKED			
ANGULAR: MACH ± 1.0°		ENG APPR.			
BEND ± 0.5°		MFG APPR.		<div></div>	
ONE PLACE DECIMAL ± 0.1		Q.A.			
TWO PLACE DECIMAL ± 0.05		COMMENTS:			
INTERPRET GEOMETRIC TOLERANCING PER: ASME Y14.5		SIZE		DWG. NO.	REV
MATERIAL		B		003-00053	000
FINISH		NONE		SCALE: NTS	
DO NOT SCALE DRAWING				WEIGHT: SEE MODEL	SHEET 2 OF 2